



# THE SPRINGPOLE EXPLORER

ISSUE 4 • AUGUST 2022

## RELEASE OF DRAFT ENVIRONMENTAL ASSESSMENT

An environmental assessment (EA) is a process to predict the environmental effects of proposed activities before they are carried out. An EA identifies possible environmental effects, proposes measures to mitigate as well as identifying socio-economic benefits including on labour and economy.

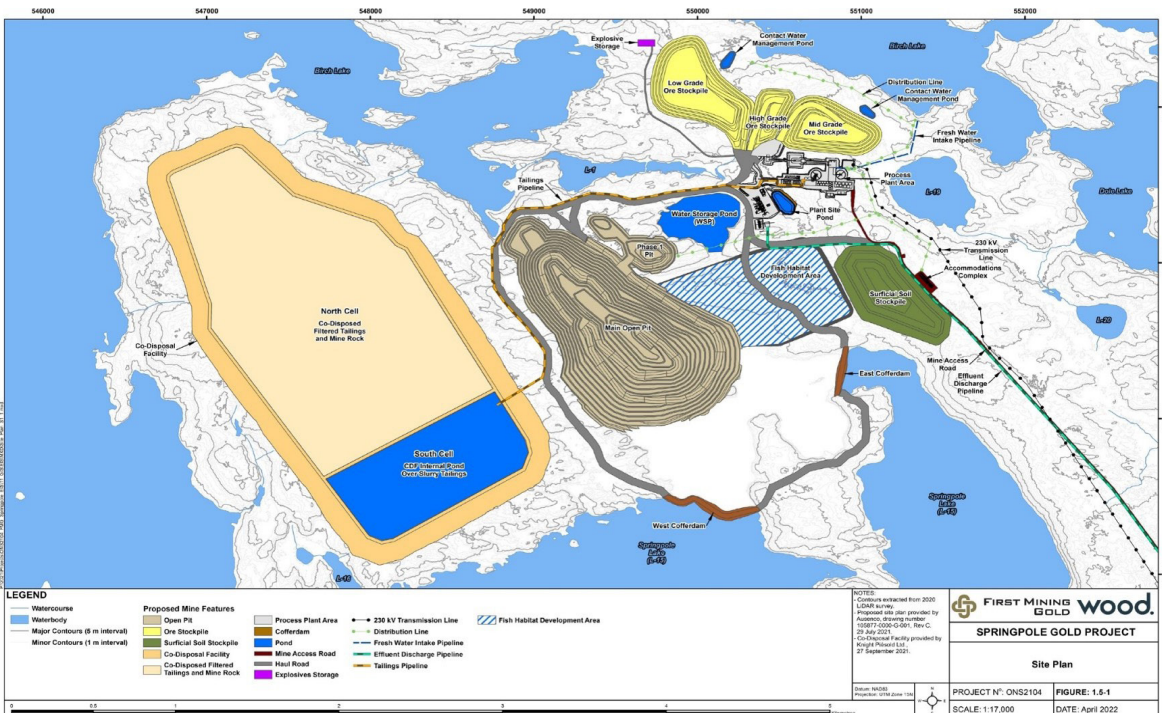
FMG has completed a **draft** Environmental Assessment (EA) for your review and input. To view this document, please visit <https://firstmininggold.com/> and click on the Environmental Assessment and Permitting link.

The Environmental Assessment (EA) is a planning tool to ensure the Project is considered in a careful and precautionary manner that avoids or mitigates possible environmental effects. A key part of the EA planning process initiated by FMG, is the early sharing of Project information, including through the publishing of the draft EA to provide a meaningful review opportunity to obtain feedback from Indigenous communities, regulators, and stakeholders. Feedback on the draft will help refine and optimize the Project and effects assessment work for a final EIS/EA submission.

Comments can be submitted via email to Meghan Bertenshaw, Project Manager at [meghan@firstmininggold.com](mailto:meghan@firstmininggold.com).

### KEY COMPONENTS OF AN EA INCLUDE:

- Consultation with Indigenous communities, government agencies, local municipalities, and the general public;
- Consideration and evaluation of alternative methods and locations for project components; and,
- Assessment of potential environmental effects and outcomes.



### IN THIS ISSUE



First Mining Gold in Your Community

PAGE 2

Summer Highlights

PAGE 3

Virtual Open House

PAGE 4

# FIRST MINING GOLD IN YOUR COMMUNITY

## EAR FALLS FAMILY SAFETY NIGHT

First Mining Gold visited Ear Falls on May 26th to attend the annual Family Safety Night to share information and answer any questions about the Springpole Gold Project. We enjoyed seeing everyone that came out and shared comments about the Project, we received a lot of positive feedback and look forward to participating in more community events!



LAUGHING LOGGERS EVENT, SIOUX LOOKOUT ON

## COMMUNITY SUPPORT

FMG is pleased to support the following events/groups in the region:

Sioux Lookout's 40th Annual Blueberry Festival

Ignace Founder's Golf Tournament

North Star Air's 25th Anniversary Celebration Charity Golf Tournament, in support of Mikinakoos children's fund

First Nations Memorial Classic Slo-Pitch Tournament

Ear Falls Canada Day Celebration

Mishkeegogamang's 3rd Annual Pow Wow

Nishnaabe Aski Nation Golf Tournament, in support of youth initiatives and busarries

Please send your request for sponsorship to [communityrelations@firstminingguld.com](mailto:communityrelations@firstminingguld.com).

## THE SPRINGPOLE GOLD PROJECT

### Timeline at a Glance

**2015** – FMG completes acquisition of Gold Canyon Resources Inc., which wholly-owns the Springpole Gold Project.

**2017** – FMG announces a positive Preliminary Economic Assessment.

**2018** – FMG submitted the Project Description to the Canadian Environmental Assessment Agency (now called the Impact Assessment Agency of Canada). Based on the Project Description, a Federal Environmental Assessment was required, and the government issued Federal Environmental Impact Statement (EIS) Guidelines for the Project.

**2019** – FMG announces the positive results of an updated Preliminary Economic Assessment.

**MARCH 2021** – FMG announces positive pre-feasibility study for the Springpole Gold Project.

**APRIL 2021** – FMG submitted the Project's Terms of Reference (ToR) to the Provincial Ministry of the Environment, Conservation and Parks. The ToR is the framework for the preparation and review of the provincial Environmental Assessment.

**NOVEMBER 2021** – ToR approved, Environmental Assessment formally underway.

**JUNE 2022** – Draft EIS/EA circulated for review and input.



## SUMMER HIGHLIGHTS



### Summer Geology Students

This summer, the FMG Birch-Uchi Exploration team welcomed two students from Ontario to join our field program. Carlee, a second-year student from Brandon University & Holden, a third-year co-op student from The University of Waterloo both joined the FMG team at the end of May 2022. The program kicked off with the FMG Exploration team's Safety, Environmental & Procedural Exploration Orientation in Red Lake and then headed straight into the field with a fully loaded summer schedule focused on soil geochemistry, mapping and prospecting around the FMG Birch Uchi land package. The FMG team values sharing knowledge and uplifting our youth by employing summer students. *"Carlee & Holden have been great in the field and we have seen great value add by combining industry experience and academia!"*

*"An enlightening experience that illuminated both the local geology but the interaction of all the people and systems needed to be successful in exploration. Truly a wonderful term and one that I would recommend to any of my peers."* - Holden

*"An amazing opportunity to put what I learnt in school to practical use; from mapping in the field to teching in the core shack. It was an excellent environment to work in with a great team"* - Carlee

## ACKNOWLEDGEMENT



## NATIONAL INDIGENOUS HISTORY MONTH

June was National Indigenous History Month in Canada. First Mining Gold recognizes the import role and impact that First Nation's have made and continue to make in Canada, and the important role they have with regards to the Springpole Project. By understanding the past, the sacrifices and contributions Indigenous people have made, we can work together to build a brighter future.

*First Mining Gold is privileged to work on both Treaty 3 & 9 lands, the traditional territory of Ojibway/Chippewa in the Kenora district of northwestern Ontario. As a modern mining company, we are committed to operating responsibly and working closely with local Indigenous communities near our project site.*

# COMMUNITY NEWS



## Open House Events

First Mining Gold will be hosting a virtual open house online this coming September. We will be sharing a draft EA for feedback on the technical work carried out to assess potential effects and mitigation measures, as well as the projected benefits. Your input will help with our final submission later in 2023. At First Mining Gold we are always working towards continual improvement and look forward to your input and participation. Come and join us to learn more about our Springpole Gold Project!

For more information, please contact Shila Morin, Community Relations Coordinator, First Mining Gold at (807) 323-2759 or [shila@firstmininggold.com](mailto:shila@firstmininggold.com)

## SPRINGPOLE PROJECT QUIZ WINNER!

Jeffrey Cedarwall



Thank you for participating!

## FACEBOOK PAGE

Follow us on Facebook where we will be sharing exciting updates and information about the Springpole Gold Project. We invite you to check out our page by typing First Mining Gold on your Facebook search bar, please give us a 'like' to keep receiving updates.



## Head Office

First Mining Gold Corp.  
Suite 2070 – 1188 West Georgia Street  
Vancouver, BC Canada V6E 4A2  
1-844-306-8827

## If you have questions or comments about the Project, contact us at:

Toll-Free: 1-844-306-8827  
Email: [communityrelations@firstmininggold.com](mailto:communityrelations@firstmininggold.com)



[firstmininggold.com](http://firstmininggold.com)